



LISTA DE EQUIPOS

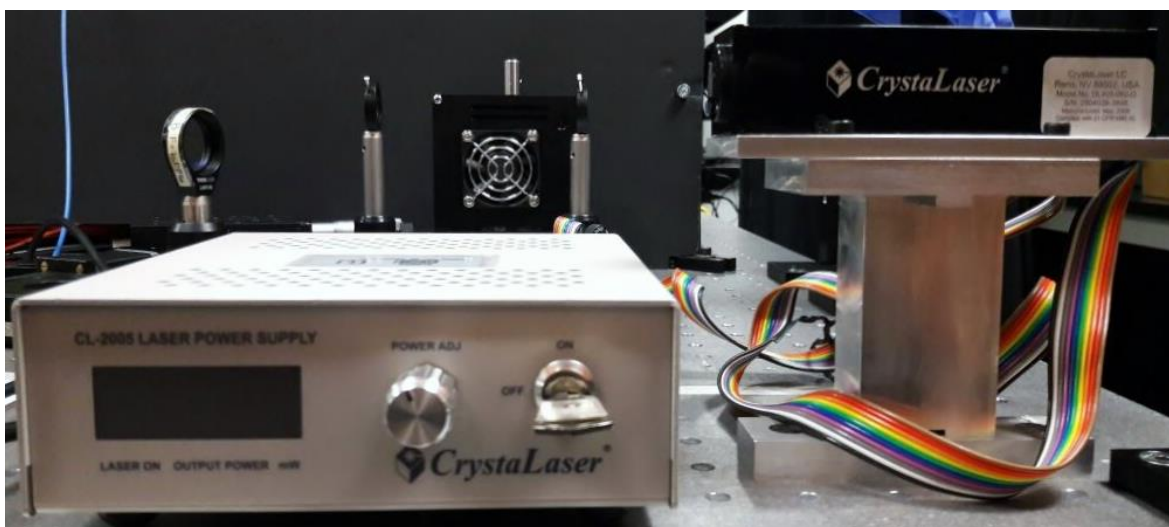
LABORATORIO DE ÓPTICA CUÁNTICA

(Q-402, Q-506)

Fuentes láser

1. Láser continuo 405nm de 40mW, con fuente ajustable en potencia (Cantidad: 1)

Marca:	Crystalaser
Modelo:	DL405-050
Año de compra:	2009
Descripción:	405 (+/-5)nm, 40mW, Low Noise TEM ₀₀ . Noise <0.5% (rms. 10Hz-20MHz). Output stability 1% Compact Solid. State laser with CL2005 power supply.



2. Láser continuo 405nm de 200mW, con fuente ajustable en potencia CrystaLaser (Cantidad:1)

Marca:	Crystalaser
Modelo:	DL405-200-O
Año de compra:	2014
Descripción:	405 (+/-5)nm, 200mW, Circular, M ₂ <1.3. Noise <0.5% (rms. 10Hz-20MHz). Output stability 1% Compact Solid. State laser with CL2005 power supply.



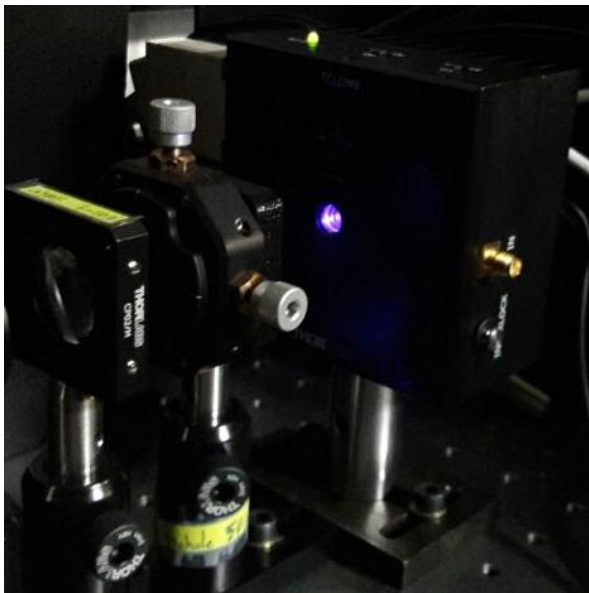
3. Láser HeNe 633nm de 0.5mW (Cantidad: 1)

Marca:	Thorlabs
Modelo:	HRP005S
Año de compra:	2009
Descripción:	Self-contained helium-neon laser system. Wavelength 633nm. Minimum Output Power 0.5mW. Power 3 Seconds After Turn-On > 75%. Polarization Linear > 500:1. Mode Structure TEM00 > 99%. 1/e2 Beam Diameter 0.57mm. Beam Divergence 1.41mrad.



4. Complete Laser Diode / Temperature Controller Set incl. Mount, Optic, & Accessories for 350-700nm (Cantidad: 1)

Marca:	Thorlabs
Modelo:	LTC100-A
Año de compra:	2016
Descripción:	<p>The LTC100 Series is a complete laser diode and temperature controller set including mount, optic and accessories. It combines the benchtop LD Current Controller LDC205C and the benchtop Temperature Controller TED200C and other required items for a stable and safe operation of standard laser diodes.</p> <p>Included Items:</p> <ul style="list-style-type: none"> • Benchtop LD Current Controller ± 500 mA HV: LDC205C • Benchtop Temperature Controller, ± 2 A / 12 W: TED200C • TEC LD Mount: TCLDM9 • All Connection Cables • Spanner Wrench for M9 x 0.5 Housing: SPW301 • Spanner Wrench for SM1 Adapters: SPW909 • TR Series Post: TR3 • Post Holder for TR Series Post: PH3 • Mounting Base: BA2 • Optic Adapter: S1TM09 • Locking Nut: SM1NT • Grounding Wrist Strap: WS02 • AR-Coated Collimation Optic: For 350 - 700 nm: C230TMD-A



5. Complete Laser Diode / Temperature Controller Set incl. Mount, Optic, & Accessories for 350-700nm (Cantidad: 1)

Marca:	Thorlabs
Modelo:	LTC56B/M
Año de compra:	2019
Descripción:	<p>Laser Diode Starter Set with Current and Temperature Controllers, Mount, Accessories, Optic for 600-1050 nm, Metric. It combines the benchtop LD Current Controller LDC205C and the benchtop Temperature Controller TED200C and other required items for a stable and safe operation of standard laser diodes.</p> <p>Included Items:</p> <ul style="list-style-type: none"> • Benchtop LD Current Controller ± 500 mA HV: LDC205C • Benchtop Temperature Controller, ± 2 A / 12 W: TED200C • TEC LD Mount: TCLDM9 • All Connection Cables • Spanner Wrench for M9 x 0.5 Housing: SPW301 • Spanner Wrench for SM1 Adapters: SPW909 • TR Series Post: TR3 • Post Holder for TR Series Post: PH3 • Mounting Base: BA2 • Optic Adapter: S1TM09 • Locking Nut: SM1NT • Grounding Wrist Strap: WS02 • AR-Coated Collimation Optic: For 350 - 700 nm: C230TMD-A



6. Complete Laser Diode / Temperature Controller Set incl. Mount, Optic, & Accessories for 350-700nm (Cantidad: 2)

Marca:	Thorlabs
Modelo:	LTC56A/M
Año de compra:	2019

Descripción:

Laser Diode Starter Set with Current and Temperature Controllers, Mount, Accessories, Optic for 350-700 nm, Metric. It combines the benchtop LD Current Controller LDC205C and the benchtop Temperature Controller TED200C and other required items for a stable and safe operation of standard laser diodes.

Included Items:

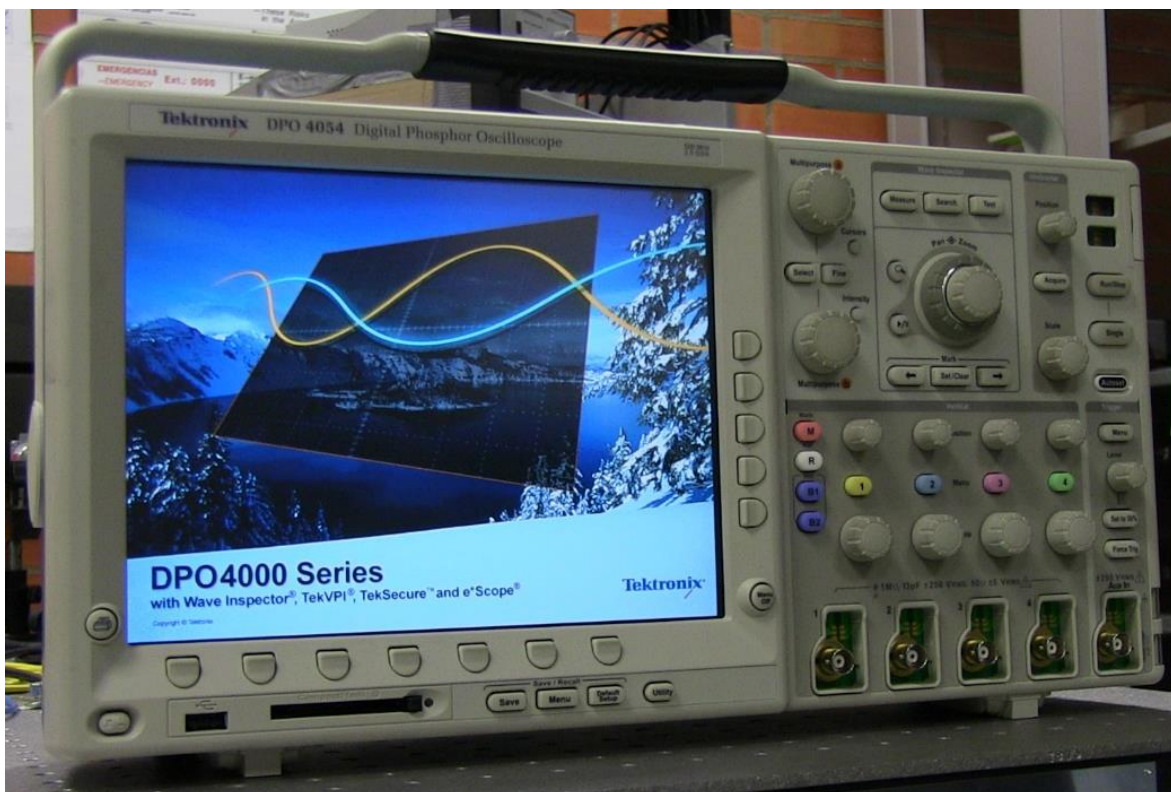
- Benchtop LD Current Controller ± 500 mA HV: LDC205C
- Benchtop Temperature Controller, ± 2 A / 12 W: TED200C
- TEC LD Mount: TCLDM9
- All Connection Cables
- Spanner Wrench for M9 x 0.5 Housing: SPW301
- Spanner Wrench for SM1 Adapters: SPW909
- TR Series Post: TR3
- Post Holder for TR Series Post: PH3
- Mounting Base: BA2
- Optic Adapter: S1TM09
- Locking Nut: SM1NT
- Grounding Wrist Strap: WS02
- AR-Coated Collimation Optic: For 350 - 700 nm: C230TMD-A



Instrumentos de medición

7. Osciloscopio digital de 4 canales, 500MHz (Cantidad: 1)

Marca:	Tektronix
Modelo:	DPO4054
Año de compra:	2009
Descripción:	Oscilloscope; digital phosphor, 500 MHz, 2.5 GS/s, 10M record length, 4-ch, color display.



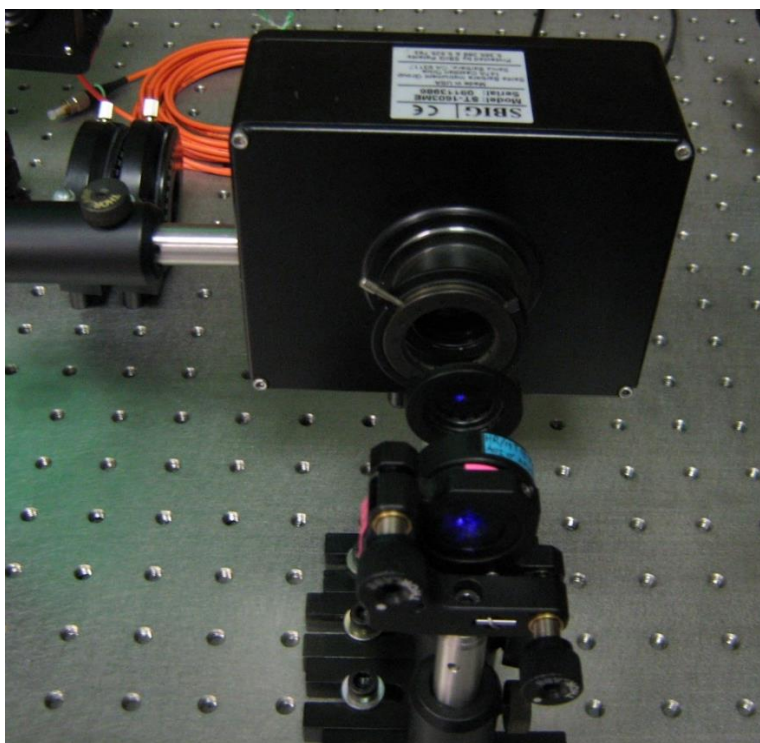
8. Detector de fotones individuales, cuentas oscuras menores a 250cps, con conector de fibra FC/PC. (Cantidad: 5)

Marca:	Perkin Elmer
Modelo:	SPCM-AQRH-13-FC
Año de compra:	2009, 2011 y 2014
Descripción:	Single photon counting module Avalanche photodiode. Peak photon detection efficiency at 650 nm: 65% typical. Active area: 180 μm . Gated output. Single +5 V supply. Maximum dark count rate: 250 counts per second. FC fiber connector attached.



9. Cámara CCD, 1530x1020pixeles, resolución de 9x9um. (Cantidad: 1)

Marca:	Santa Barbara Instruments Group (SBIG)
Modelo:	ST-1603ME
Año de compra:	2010
Descripción:	High quantum efficiency CCD imaging camera. Imaging CCD Kodak KAF-1603ME. Imaging/Pixel Array 1530 x 1020 pixels. CCD Size 13.8 x 9.2 mm. Total Pixels 1.56 million. Pixel Size 9 x 9 microns. Peak QE >80%. Shutter Electromechanical. Exposure 0.09 to 3600 seconds, 10ms resolution. Full Frame Download ~2.1 seconds with USB 2.0. Temperature Regulation +/- 0.1 deg. C. Power 12VDC, Power Supply Included. Dimensions 5 x 4 x 2.5 inches (including fan). Mounting T-Thread.



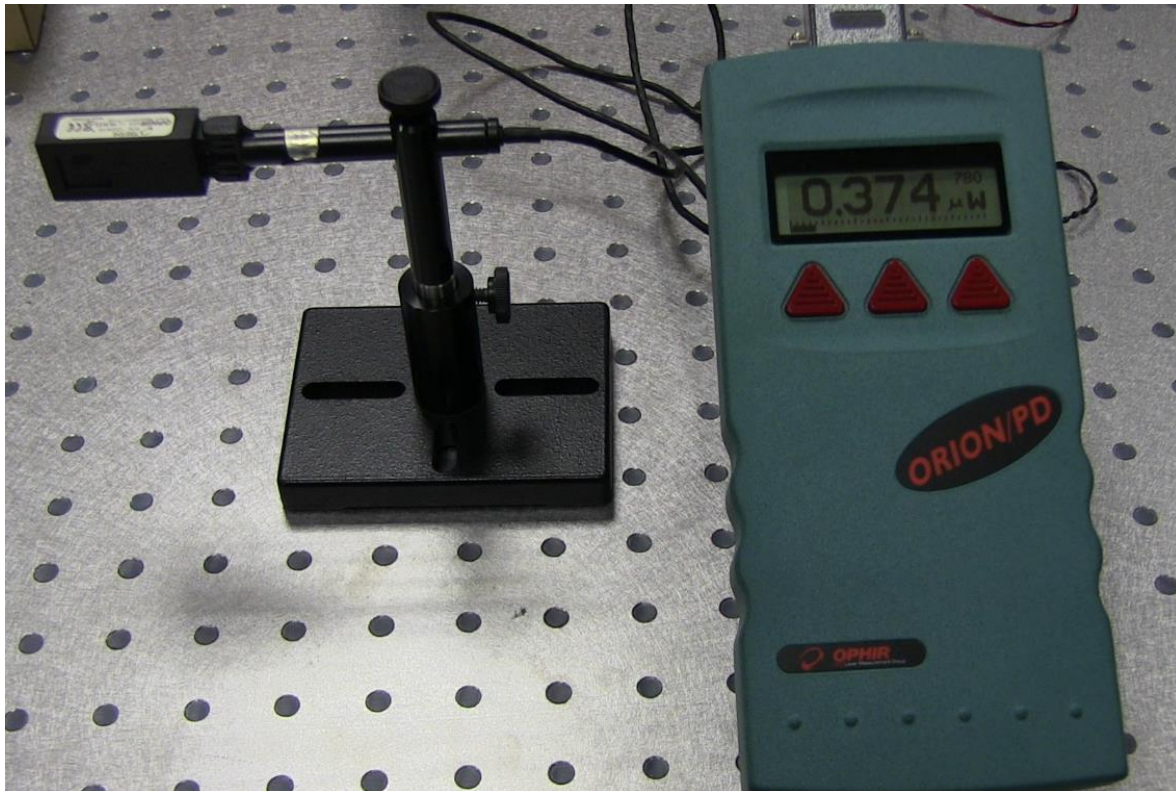
10. Cámara CCD 1280 x1024 pixeles, pixel de tamaño 4.65um x4.65um

Marca:	Thorlabs
Modelo:	DCU224M
Año de compra:	2018
Descripción:	1280 x 1024 Pixel B&W Version . 1/2" Image Sensor with Square Pixels. 15 fps (Full Frame Mode) C-Mount Lens Mount for use with our Standard C-Mount Camera Lenses and High-Magnification Zoom Lenses. Global Shutter Universal Trigger Input. ThorCam™ Software for Windows® 7 and 10 Operating Systems SDK and Programming Interfaces Provide Support for: C, C++, C#, and Visual Basic .NET APIs LabVIEW, MATLAB, and μManager Third-Party Software



11. Medidor de potencia óptica, con cabeza lectora (Cantidad: 1)

Marca:	Ophir Spiricon
Modelo:	cabeza: PD300, pantalla: Orion-PD
Año de compra:	2009
Descripción:	<p>Cabeza: Aperture 10x10mm. Spectral Range 350-1100nm. Power Range 500pW-300mW. Dimensions 120 L x 13 W x 21 D (mm).</p> <p>Pantalla: Orion power meter for photodiode sensors. Supports all Ophir photodiode sensors 200-1800 nm. Wavelength corrected at 1nm increments with user selected favorite wavelength for ease of use. Display Watts or dBm. Auto or manual range. Laser tuning screen to maximize laser power.</p>



12. Medidor de potencia óptica y energía (Cantidad: 1)

Marca:	Thorlabs												
Modelo:	cabeza: S130C, pantalla: PM100D												
Año de compra:	2023												
Descripción:	<p>Cabeza:</p> <table border="1"> <tr> <td>Aperture Size</td> <td>Ø9.5 mm</td> </tr> <tr> <td>Wavelength Range</td> <td>400 - 1100 nm</td> </tr> <tr> <td>Power Range (with Filter)</td> <td>500 pW - 5 mW (Up to 500 mW)</td> </tr> <tr> <td>Detector Type</td> <td>Si Photodiode</td> </tr> <tr> <td>Linearity</td> <td>±0.5%</td> </tr> <tr> <td>Resolution</td> <td>100 pW^d</td> </tr> </table>	Aperture Size	Ø9.5 mm	Wavelength Range	400 - 1100 nm	Power Range (with Filter)	500 pW - 5 mW (Up to 500 mW)	Detector Type	Si Photodiode	Linearity	±0.5%	Resolution	100 pW ^d
Aperture Size	Ø9.5 mm												
Wavelength Range	400 - 1100 nm												
Power Range (with Filter)	500 pW - 5 mW (Up to 500 mW)												
Detector Type	Si Photodiode												
Linearity	±0.5%												
Resolution	100 pW ^d												

	<p>Pantalla: Compact, Handheld, Power and Energy Meter Console, Large 4" LCD Screen , Long-Life Internal Li-Polymer Battery, Pre-Installed 8 GB SD Memory Card for Data Storage, Console is Calibrated and Includes Certificate of Calibration.</p>
--	--



13. Medidor de longitud de onda (Cantidad: 1)

Marca:	High Finesse
Modelo:	WS6-200 Standard (VIS) 330nm-1180nm
Descripción:	<p>The WS6-200 series offers an accuracy of 200 MHz. It is mostly used for pulsed lasers and cw laser. This instrument is best combined with singlemode fibers and the singlemode multichannel technology in order to reach optimum accuracy.</p> <ul style="list-style-type: none"> • Absolute (and Other) Accuracies 1) : <ul style="list-style-type: none"> ○ 192 – 330 nm (with multi mode fiber) 0.3 pm ○ 330 – 375 nm 300 MHz ○ 375 – 800 nm 200 MHz ○ 800 – 1180 nm 150 MHz ○ 1180 – 2250 nm 120 MHz ○ Quick coupling accuracy (with 50 μm multi mode fiber) 600 MHz ○ Wavelength deviation sensitivity/Measurement resolution 4 MHz ○ Linewidth estimation accuracy 400 MHz • Required Minimum Input Energy and Power: 0.02 – 15 μJ or μW • FSR of the Fizeau Interferometers (Fine/Wide Mode): 16 GHz/100 GHz • Automatic Temperature Corrections •



14. Analizador de espectro (Cantidad: 1)

Marca:	Ocean Optics
Modelo:	HR4000CG-UV-NIR
Descripción:	<p>HR4000CG-UV-NIR High Resolution Spectrometer for Biological and Chemical Applications. The HR4000CG-UV-NIR from Ocean Optics is a Spectrometer with Wavelength Range 200 to 1100 nm, Spectral Resolution 0.75 nm.</p> <p>General Parameters</p> <ul style="list-style-type: none"> • Measuring Techniques: Irradiance, Reflectance & Transmittance • Spectrometer Type: Modular, Portable • Wavelength Range: 200 to 1100 nm • Spectral Resolution: 0.75 nm • Spectrum Band: UV-NIR • Integration Time: 4 ms - 20 sec • Aperture (f-number): f/4 • Detector: Toshiba TCD1304AP • Detector Range: 190 to 1100 nm • Dynamic Range: 2000:1 for a single acquisition • Entrance Slit: 5 μm wide • Grating: HC-1, 300 lines/nm • Input Focal length: F/4 101mm • Noise Ratio: 300:1 (full signal) • Output Focal length: 68 mm • Power Requirements: External Power Supply: 250 mA • Relative Humidity: 0 to 90% non-condensing



15. Perfilador de haces 7 cuchillas, detector de silicio (Cantidad: 1)

Marca:	Coherent
Modelo:	BeamMaster USB BM-7 Si-enhanced
Año de compra:	2014
Descripción:	Knife-edge profiler; 9mm square with 7 knife edges; Enhanced silicon detector. CW laser beam shape, power and position measurements. Beam sizes from 3 μm to 9 mm with 0.1 μm resolution and high dynamic range. Real-time Windows display, analysis and data-logging system. Wavelengths from 190 nm to 1800 nm. USB interface available.



16. Cortador óptico

Marca:	Thorlabs																
Modelo:	Controlador: MC200B y MC1F10HP																
Año de compra:	2023																
Descripción:	<p>The MC2000B Optical Chopper is a precision instrument that utilizes advanced features to modulate light from a continuous beam. The controller uses a phase-locked loop (PLL) motor speed control design to precisely maintain the chopping speed and phase relative to a reference signal. An internal, crystal-stabilized, frequency synthesizer provides an accurate and stable reference frequency for stable long-term performance. The MC2000B Chopper offers faster locking times, interface improvements, and a larger selection of blades than our previous-generation MC2000 Optical Chopper.</p> <table border="1" style="margin-left: auto; margin-right: auto;"> <thead> <tr> <th colspan="2">Key Specifications^a</th> </tr> </thead> <tbody> <tr> <td>Chopping Frequency, with Various Blades</td> <td>4 Hz – 10 kHz</td> </tr> <tr> <td>Frequency Drift</td> <td><20 ppm/°C</td> </tr> <tr> <td>Ext. Reference Compatibility</td> <td>TTL/CMOS</td> </tr> <tr> <td>Frequency Resolution</td> <td>0.01 Hz (2 Slot Blades) 0.1 Hz (MC1F10HP, Default Blade) 1 Hz (All Other Blades)</td> </tr> <tr> <th colspan="2">External Reference Signal Synchronization</th> </tr> <tr> <td>Harmonic</td> <td>2 to 15X</td> </tr> <tr> <td>Subharmonic</td> <td>1/2 to 1/15X</td> </tr> </tbody> </table>	Key Specifications ^a		Chopping Frequency, with Various Blades	4 Hz – 10 kHz	Frequency Drift	<20 ppm/°C	Ext. Reference Compatibility	TTL/CMOS	Frequency Resolution	0.01 Hz (2 Slot Blades) 0.1 Hz (MC1F10HP, Default Blade) 1 Hz (All Other Blades)	External Reference Signal Synchronization		Harmonic	2 to 15X	Subharmonic	1/2 to 1/15X
Key Specifications ^a																	
Chopping Frequency, with Various Blades	4 Hz – 10 kHz																
Frequency Drift	<20 ppm/°C																
Ext. Reference Compatibility	TTL/CMOS																
Frequency Resolution	0.01 Hz (2 Slot Blades) 0.1 Hz (MC1F10HP, Default Blade) 1 Hz (All Other Blades)																
External Reference Signal Synchronization																	
Harmonic	2 to 15X																
Subharmonic	1/2 to 1/15X																



Actuadores

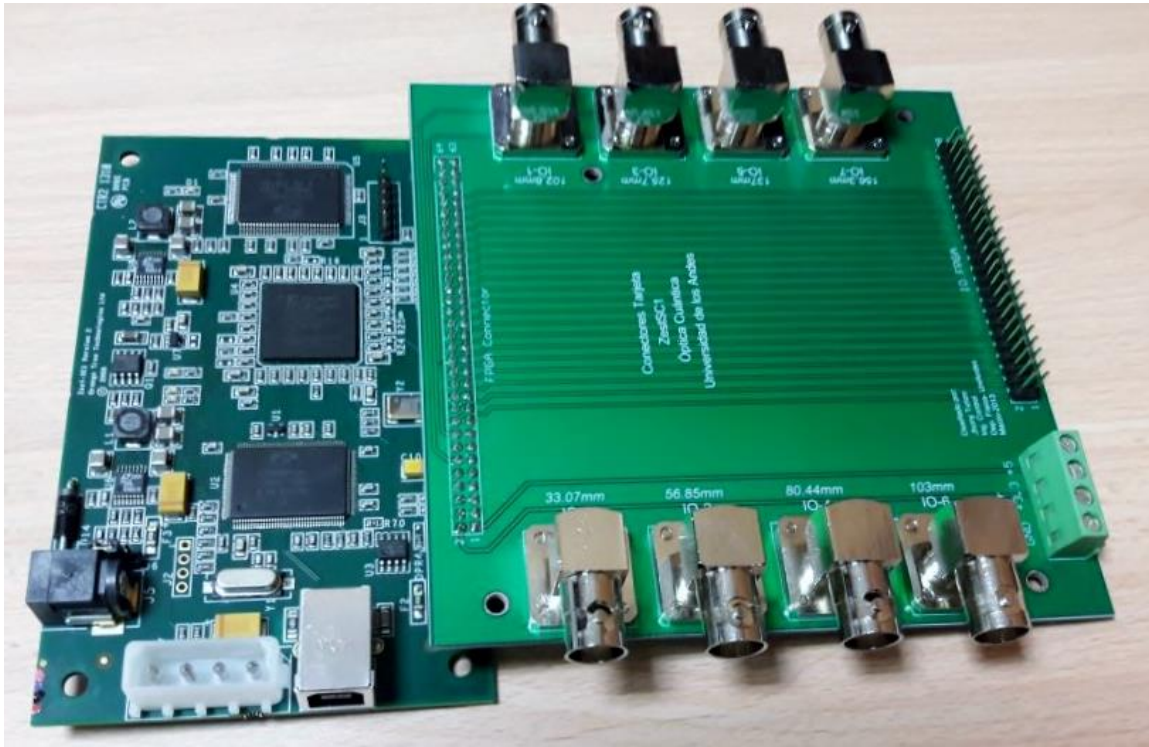
17. Plataforma traslacional 5mm con piezoeléctrico y controlador USB (cantidad: 2)

Marca:	Thorlabs
Modelo:	Plataforma: NFL5DP20S/M, controlador: BPC301
Año de compra:	2014
Descripción:	<p>Plataforma: NanoFlex™ single-axis compound flexure stage. Travel of 5mm of coarse manual adjustment with a resolution of 1µm. The differential adjusters also offer 300µm of fine adjustment at a resolution of 50nm. Piezo actuated version, 20µm piezo travel with a 20nm resolution when driven by one of the Thorlabs 0 to 75V piezo controllers. Load capacity is 1Kg (2.2lbs).</p> <p>Controlador: 1-Channel 150 V Benchtop Piezo Controller with USB. Variable output selection: 75 V, 100 V, or 150 V. Closed-loop PID with advanced control algorithm. Strain gauge or capacitive sensor feedback options. High-resolution position control for very fine positioning applications. Voltage ramp/waveform generation capability for scanning applications. High bandwidth (10 kHz) piezo positioning. Auto-configure function for thorlabs ident-equipped piezo actuators. User-controlled digital I/O port. USB plug-and-play – multiaxis expansion. Motor control I/O port (jogging, interlocks). Full software control suite supplied. Intuitive software graphical control panels. Extensive ActiveX® programming interfaces. Fully software integrated with other APT™ family controllers (integrated systems development).</p>



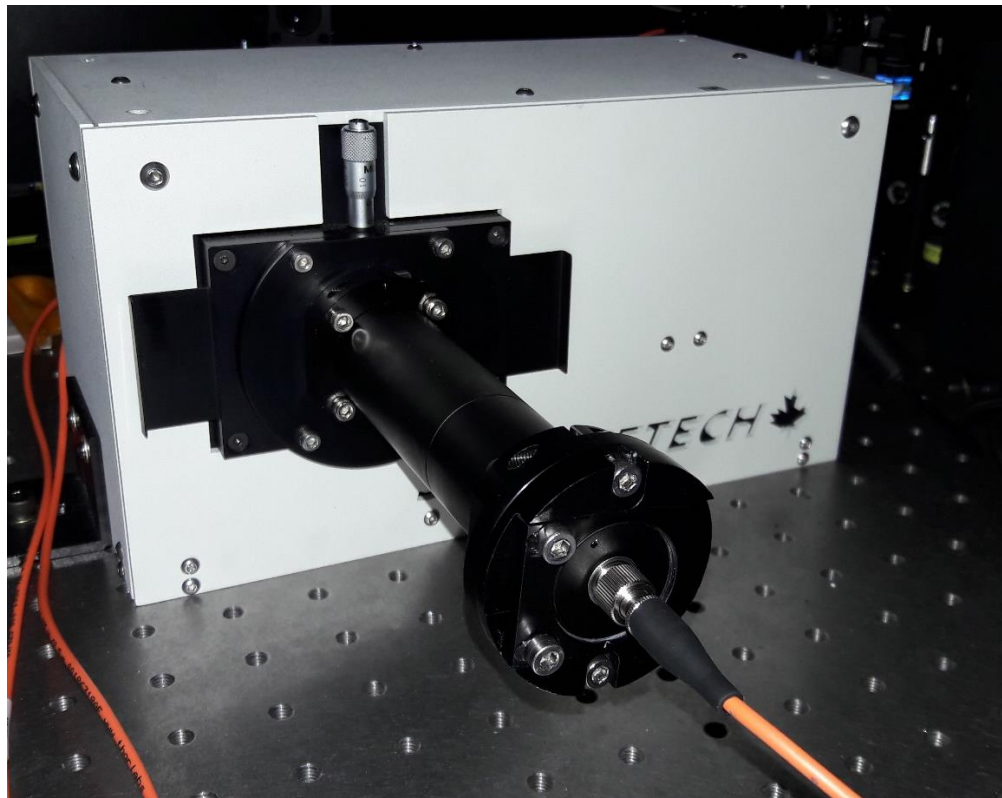
18. FPGA (Cantidad: 3)

Marca:	Orange Tree Technologies Ltd.
Modelo:	Zest-SC1 y Zest-SC2
Año de compra:	2009,2013,2016
Descripción:	<p>ZestSC1: FPGA USB board is a low-cost, high performance FPGA board suitable for prototyping and production through to OEM volumes. 1 million gate Xilinx Spartan FPGA, 8MBytes SRAM, 49 user IO pins. (Cantidad:2)</p> <p>ZestSC2: FPGA USB board has all the benefits of the ZestSC1 as a high performance FPGA board suitable for prototyping and production through to OEM volumes. 4 million gate Xilinx Spartan FPGA, 64MB SDRAM, 8MB SRAM, Flash, massive 200 user IO pins. (Cantidad:1)</p>



19. Monocromador / espectrógrafo con USB, Controlado por computador (Cantidad: 2)

Marca:	Siencetech
Modelo:	9072
Año de compra:	2016
Descripción:	9072S is a small 1/8m scanning monochromator. The 9072S uses plane gratings 30mm x 30mm in size and utilizes a Czerny Turner optical configuration. The 9072S is designed to be used with single channel detectors or connected to another 9072S to form a double additive or subtractive system. The base 9072S system has a triple grating turret which is computer controlled.



20. Impresora 3D (Cantidad: 1)

Marca:	3D Make-R
Modelo:	Impresora 3D Prusa Tairona multimaterial
Año de compra:	2015
Descripción:	Tecnología: modelado por fusión/adición (FDM/FFF) Volumen De Impresión: 200 mm largo x 195 mm ancho x 210mm alto Resolución De Capa Máxima: 0.05 mm Diámetro Nozzle: 0.4 mm Diámetro De Filamento: 3 mm Hotend: All Metal Catnozzle versión 2.3 Tipos De Archivo: .obj .stl .dea .amf Sistemas Operativos: Windows / OSX / Linux Chasis: Prusa

Tairona en Acero inoxidable de 3mm **Superficie De Impresión:** PCB MK2b (dual 12/24V) **Motores:** Nema 17 paso a paso 4.0 kg/cm de torque, 1.8 grados por paso **Dimensiones:** 45cms ancho x 43cms de largo x 40 cms alto **Peso:** 9 kg **Temperatura De Operación:** 10° a 32° **Entrada Ac:** 100-240 VAC 50-60 Hz **Requerimientos De Potencia:** 12 VDC @ 16 Amperios.

